

Coal Services Order 34 Regional Communication Workshop - Newcastle 9 June 2022



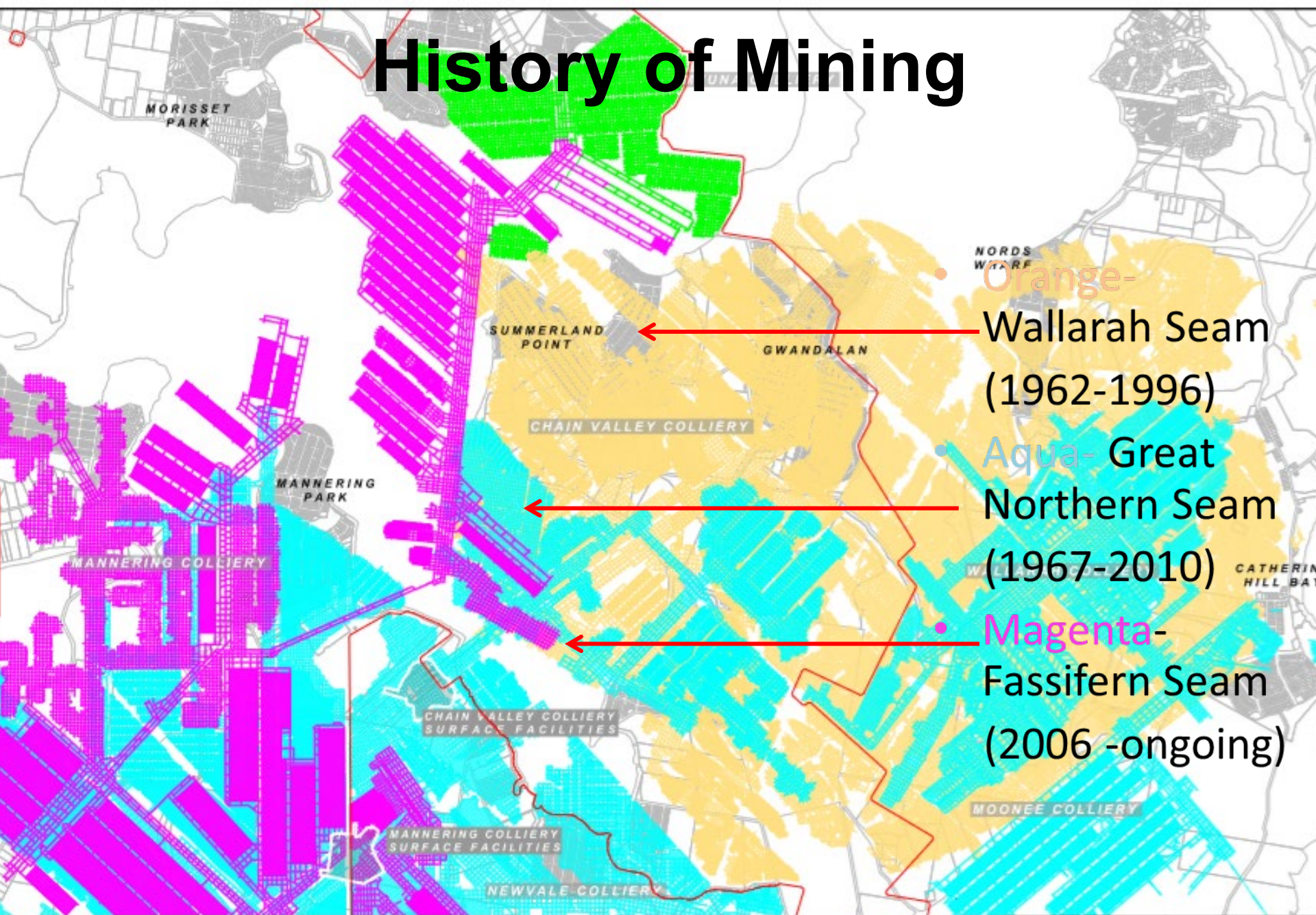
Chain Valley Colliery – Mine Ownership over the years



- J&A Brown & Seaham Collieries - 1962
- Coal & Allied 1984 -94
- Coal Operations Australia Limited 1994-98
- BHP Billiton – Ingwe JV 1999
- Kepple Mining 2000
- Labour Co-op 2002
- Excel Mining 2003
- Peabody 2006
- LDO 2010
- Receivership Oct 2018
- Delta Coal (Delta Electricity) April 2019



History of Mining



Chain Valley Colliery – Mining Methods Over time



In Place Mining - Bord and Pillar

- Total pillar extraction under Lake Macquarie - Wallarah seam circa 1970's

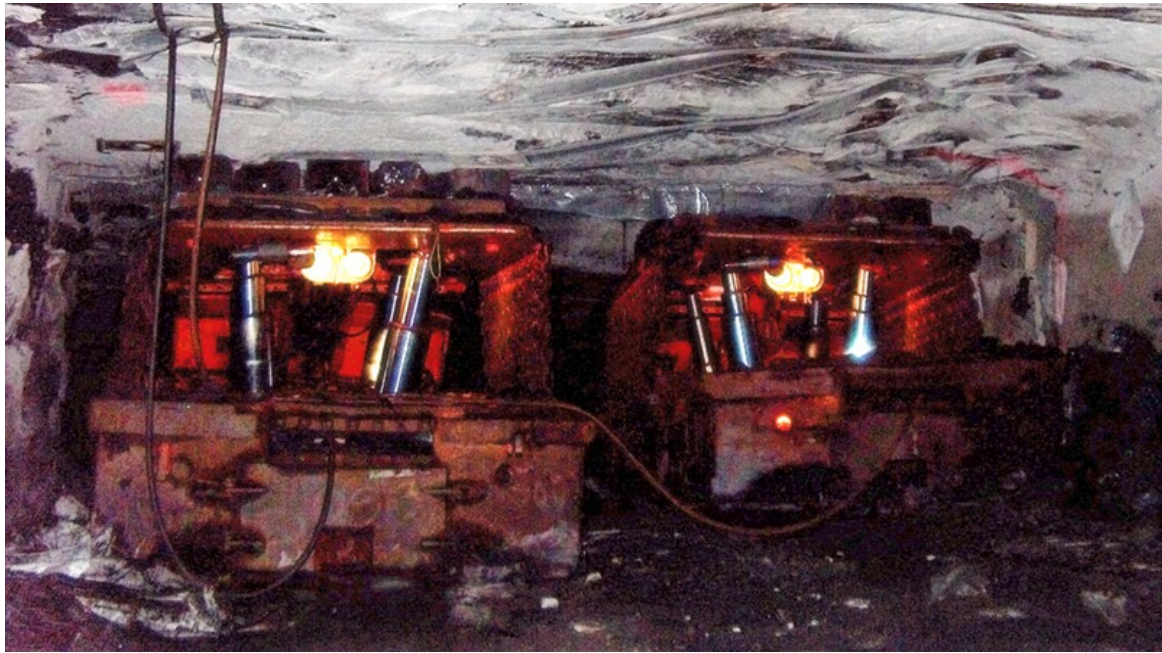


Chain Valley Colliery – Mining Methods Over time



Pillar Extraction: Breaker Line Supports

- 1980's



Chain Valley Colliery – Mining Methods Over time



Place Change Mining

- 1990's



Chain Valley Colliery – Mining Methods Over time

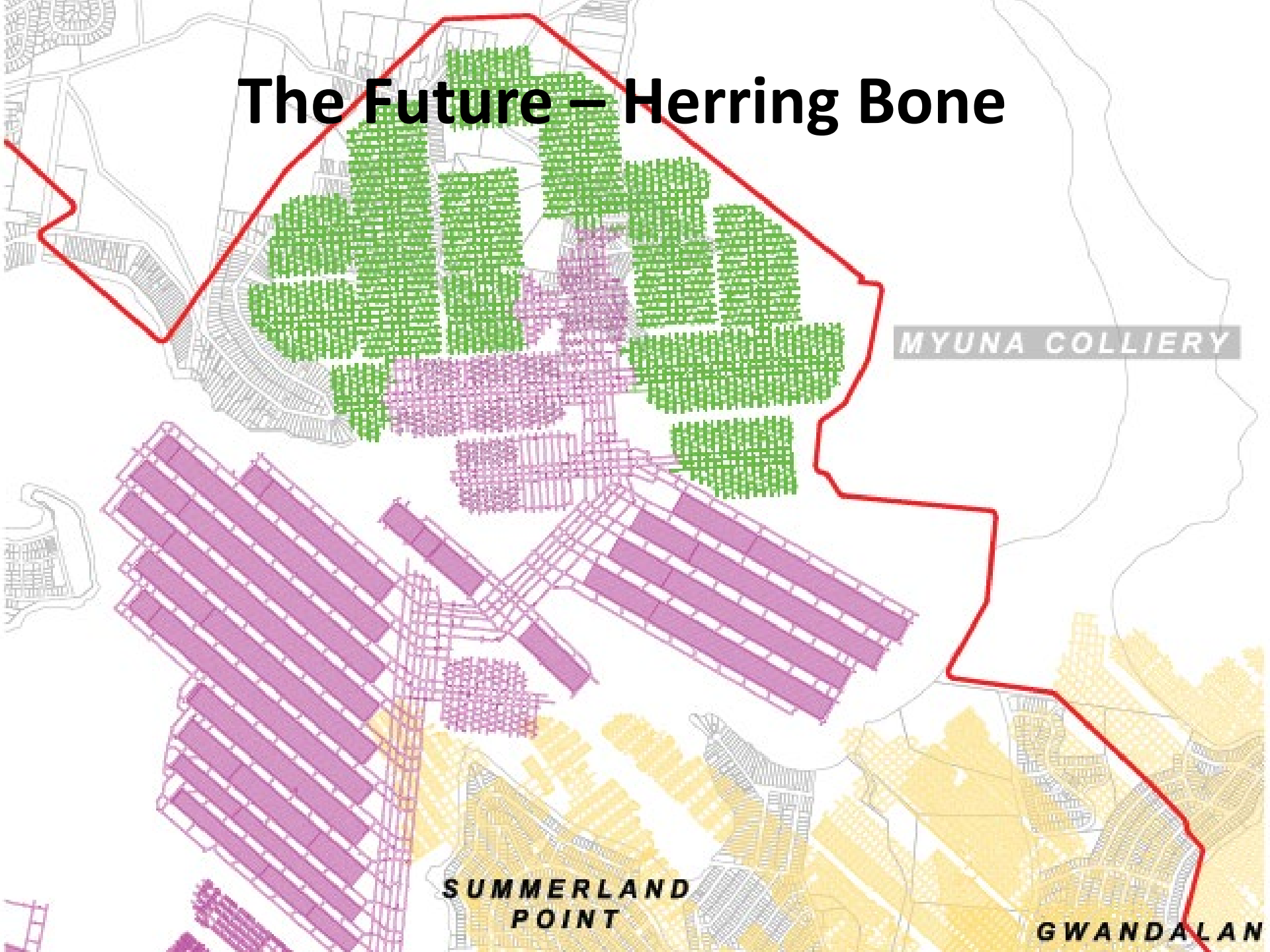


Minwall – 95m void

- 2011



The Future – Herring Bone



MYUNA COLLIERY

SUMMERLAND
POINT

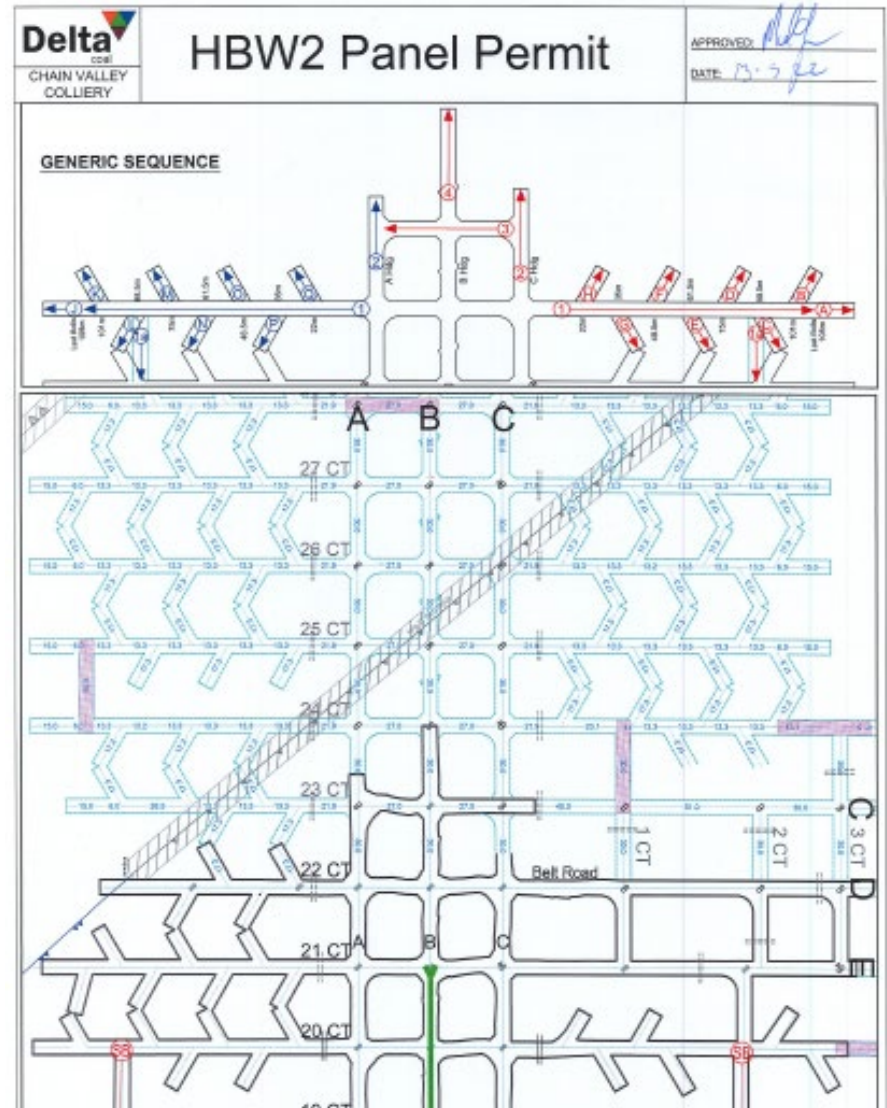
GWANDALAN

Chain Valley Colliery – Mining Methods Over time: Current - 2020



Herring Bone

- Use of Monorail (Dev)
- Mobile bootend
- Limited Heading development
- Mind set shift – going away from tunneling i.e gateroad development to conventional bord and pillar

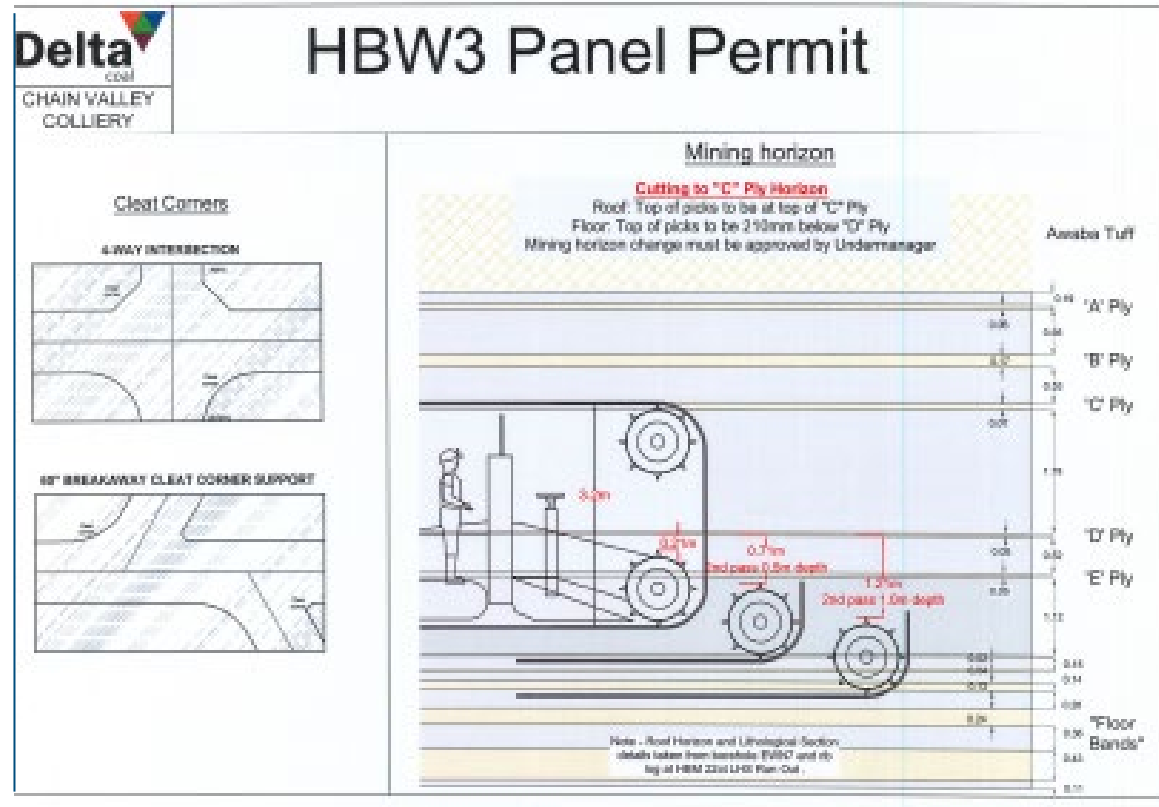


Revision of the Safety Management System



Herring Bone

- Revisited BBRA
- WRAC Herring Bone RA
- Full revision of PCP, PHMP, SMP, Process Maps, ATMs and associated SWPs
- Limited Heading development
- Retraining ongoing - constantly being refined.



Challenges moving to Herring Bone



- Where/how does training fit into the operation – time/cost constraints
- Operation is exclusively 12hr shifts.....no training day!!!
- Far more labour intensive than miniwall
- Metric reversed: STF V's HMT
- Upskilling of workforce in a forever changing workplace
- Recruitment from a depleted coal industry workforce
- Need for constant improvement and change

